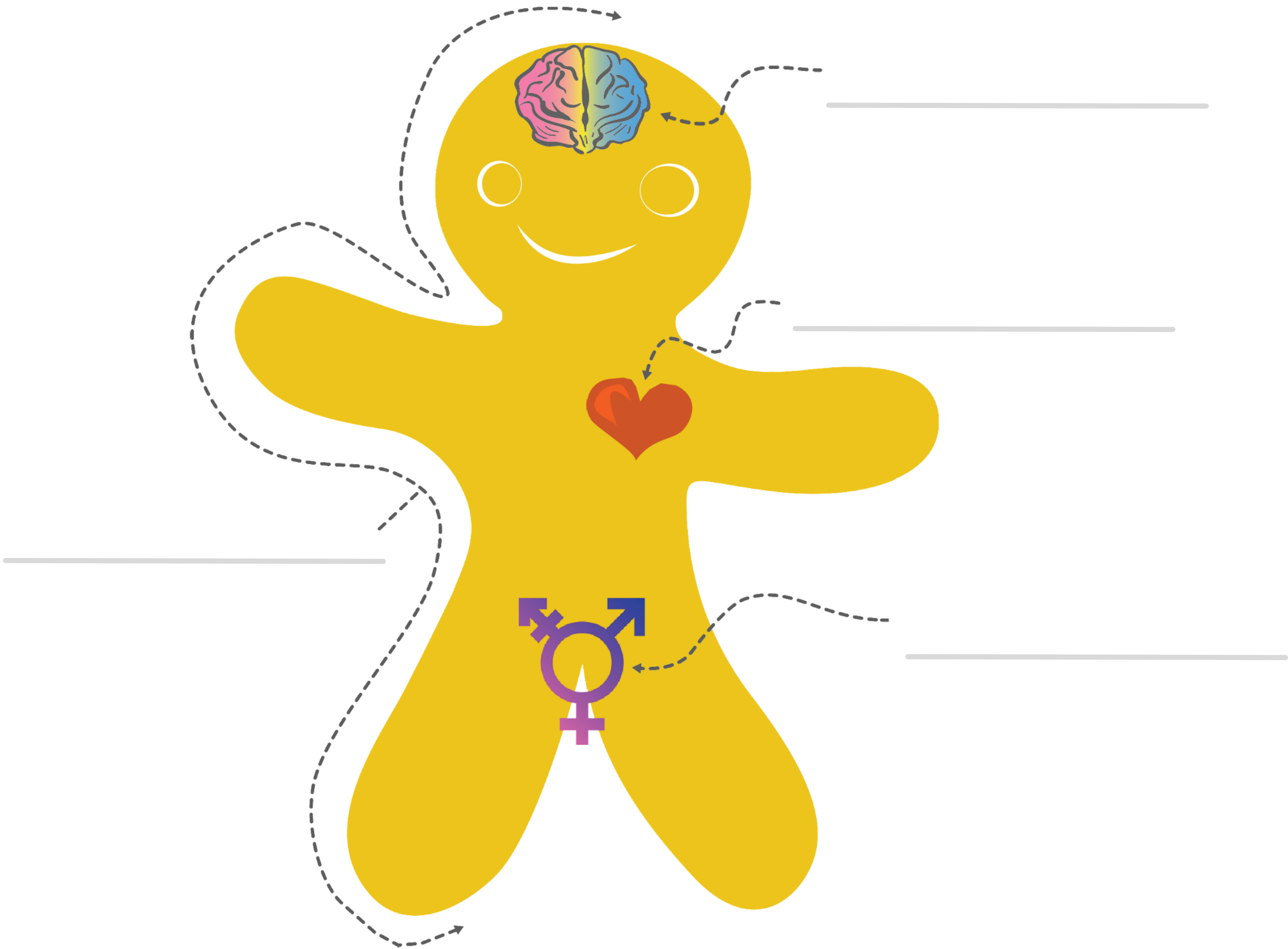


# The Genderbread Person<sup>v4</sup>

VERSIONE ITALIANA

by its pronounced **METROsexual**.com  
tradotto in Italiano da  
**fluidsex**



⊘ significa un'assenza di quello che c'è sul lato destro



---

⊘

→

---

⊘

→

---



---

⊘


→

---

⊘

→

---



---

⊘

→

---

⊘

→

---



---

⊘

→

---

⊘

→

---

e/o



---

⊘

→

---

⊘

→

---